

# MOEN® 摩恩

## 独立式浴缸

安装说明书

## Freestanding Bathtub

INSTALLATION INSTRUCTIONS

如需安装支持，配件丢失或替换等，请联系本公司。  
对于中国大陆以外的市场，请咨询当地经销商。

(中国大陆) 400-630-8866

(中国大陆) www.moen.cn

(中国大陆以外) www.moen.com.hk

For installation support, missing or replacing parts, etc., please contact the company. For consumers in markets outside the Chinese mainland, please consult the local dealer.

(Chinese Mainland) 400-630-8866

(Chinese Mainland) www.moen.cn

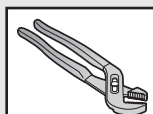
(Outside Chinese Mainland) www.moen.com.hk

### 推荐工具

为了安全和让安装和替换变得容易，本公司建议您使用以下工具：

### HELPFUL TOOLS

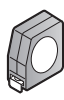
For safety and ease of installation and replacement, the company recommends the use of the following tools:



可调钳  
Adjustable Pliers



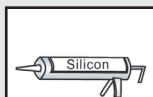
螺纹密封带  
Thread Seal Tape



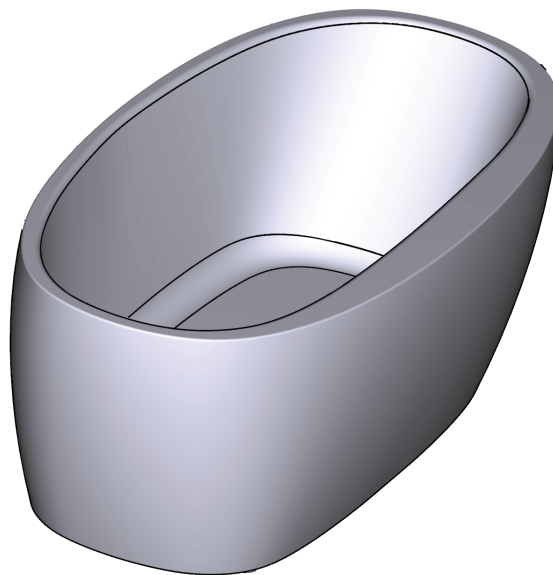
卷尺  
Tape Measure



水平仪  
Level



硅胶  
Sealant



图片仅供参考  
(款式因型号而异)

Image is for reference only  
(Style varies by model)

记录购买的型号：

(保存安装说明书以备将来参考)

Record Purchased Model Number:  
(Save instruction sheet for future reference)

---

## 产品描述

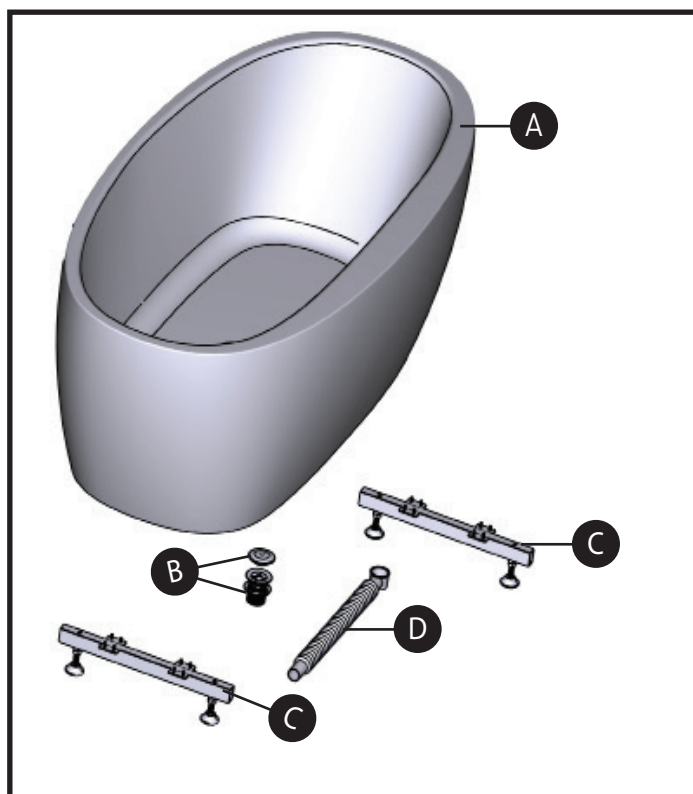
材料: 亚克力

颜色: 白色或黑白

## Product Description

Material: Acrylic

Available Color: White or White&Black



## 配件清单

- A. 浴缸
- B. 排水组件
- C. 水平调节支架组件
- D. 排水软管

## Parts List

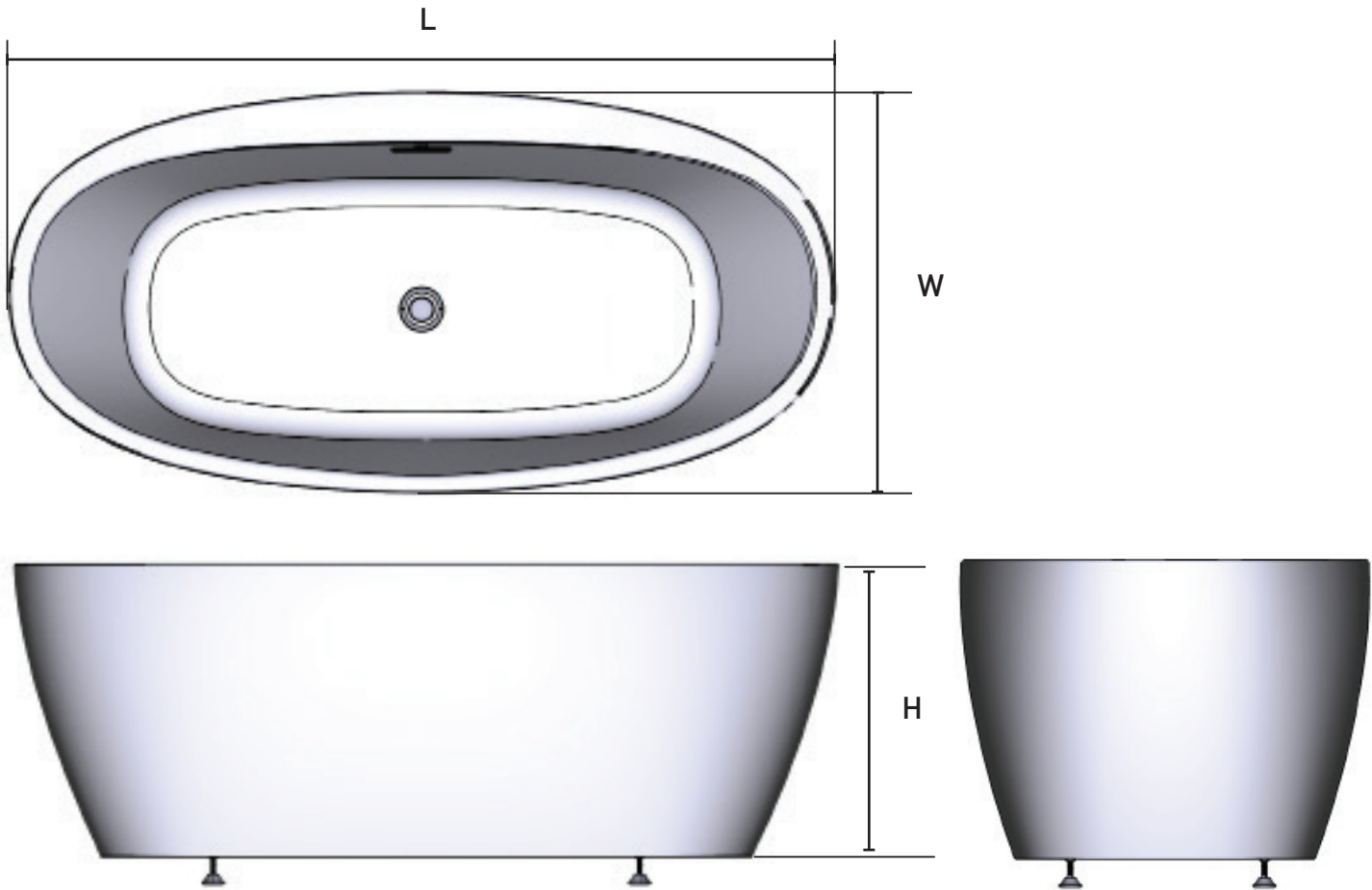
- A. Bath
- B. Waste Assembly
- C. Self-leveling Assembly
- D. Drain Hose

产品尺寸 Rough-in Dimension

单位：毫米  
Units: mm

型号 Model	尺寸(L) Dimension (L)	尺寸(W) Dimension (W)	尺寸(H) Dimension (H)	形状 Shape
SWT181D	1700	800	600	(椭圆形) (Oval)
SWT182D	1700	800	600	(方形) (Square)
SWT183D	1600	800	600	(椭圆形) (Oval)
SWT185D	1500	800	600	(椭圆形) (Oval)
*SWT181DF2	1700	800	600	(椭圆形) (Oval)
*SWT182DF1	1700	800	600	(方形) (Square)
*SWT183DF1	1600	800	600	(椭圆形) (Oval)
SWT186D	1700	800	600	(方形) (Square)
*SWT186DF <sup>△</sup>	1700	800	600	(方形) (Square)
*SWT181DF3	1500	800	600	(椭圆形) (Oval)

\*这些型号带扶手      △这些型号是黑白颜色  
\*These models include handrails    △These models are black and white



## 重要信息

- 为了保证产品质量，请您于安装前仔细检查产品的质量。如在安装后再提出与以下内容有关的质量问题，这将不包括在我们的责任范围内。
- 安装前，请仔细阅读本手册，并正确施工。
- 请按本说明书内记载的方法施工。擅自变更施工方法所引起的不良后果，本公司将不负责任所引起之损失。
- 需请专业人员施工。
- 在正式安装之前，请检查以下情况: a. 浴缸是否因运输不当有漏水现象； b. 浴缸表面是否有任何撞击或破损现象。

## 安装须知

- 施工期间将所有的材料都留在箱内，以防止损坏。
- 更换旧浴缸：搬去旧浴缸，清除所有旧墙材料和地板贴面以便于安装。拆除任何与新浴缸尺寸不匹配的旧管道。安装新浴缸：按安装尺寸图铺设管道。堵塞供水管，并检查渗漏。
- 本浴缸可以在浴室墙面完工后安装。但请根据浴缸结构和尺寸预留相应安装空间，预排地漏和供水管。
- 施工过程中，请不要将浴缸表面的保护膜撕开。
- 如果是在边缘安装水龙头，钻孔前要确保和溢水管互不干涉。
- 请确保安装浴缸地板的水平。

## Important Information

- In order to avoid quality dispute, please kindly check product before installation. Or innoci should not be liable for any quality issue raised after installation.
- Please read the instruction carefully before begining to install.
- Please follow steps in the instruction to install this product or may result in costly mistake. Innoci shall not be responsible for any loss from that mistake.
- Professional help is required for installation of this product.
- Before starting installation, check and ensure: a. Bathtub are free of leaks that may occur during delivery. b. Bathtub surface is free of hit and damage.

## Installation Consideration

- Leave all materials in the crate during construction to prevent damage.
- For bath replacement: Remove the old bath, and remove enough old wall material and floor covering from the area to allow for installation. Remove any old plumbing that does not conform to the rough-in requirements. For new installation: Position the plumbing according to the rough-in dimensions. Cap the suppliers, and check for leaks.
- The bath can be installed after the decoration of the bathroom walls is finished. However, please provide adequate available space for the bath unit in accordance with rough-in. Arrange the drain and water pipe in advance.
- Don't remove bathtub protecting film during installation.
- If installing a rim-mounted faucet, make sure there is no interference with drain overflow before drilling any holes.
- Make sure that the floor for installing the bathtub is at a level.

## 安装前的准备工作

### 1. 准备底层地板

检查浴缸下的地面，若需要请进行修补。请确保底层地面水平，对底层地面做防水处理。

### 2. 保护浴缸

在浴缸表面盖上保护套或类似的材料，小心不要划伤浴缸表面。

### 3. 管道的准备

将进水管道和排水管道按安装尺寸排布，检查供水管是否漏水。

### 4. 防水密封的准备

安装前，必须去除排水口、溢水口及挡水边四周的防护膜，以便进行防水密封处理。

## Before Installation

### 1. Subfloor Preparation

Check the flooring under the bath, and make repairs as needed. Make sure the subfloor is level. It is strongly recommended to prepare waterproof layer for the subfloor beforehand.

### 2. Protect the Bath Unit

Cover the bath with a protective layer or similar material. Be careful not to scratch the bath surface.


### 3. Plumbing Preparation

Position inlet supplies and outlet supplies according to rough-in dimensions. Cap the supplies and check for leaks.

### 4. Watertight Seal Preparation

The protective film must be removed from around the waste outlet, overflow and water fender prior to installation in order to make a watertight seal at these points possible.

2




A 3D perspective illustration of a white, oval-shaped bathtub. A dark grey, rectangular shower seat is mounted on the right side of the tub. The seat is attached to the tub's rim with two metal brackets and screws. A label 'C' in a black circle is positioned below the seat, with a line pointing to it.

3

A diagram of a pedestal sink. Callout B points to the drain opening on the underside of the sink bowl. Callout D points to the pedestal support structure below the sink.

4



A diagram of a white bathtub with a central drain and two side jets. Above the tub, there are three columns of four blue water droplets each, totaling 12 droplets, representing steam or water vapor.

Note: A small amount of water may pool owing to surface tension.

## 拆卸和安装浴缸

拆卸旧的独立浴缸并安装新的独立浴缸:

1. 把旧浴缸水平抬起并移出安装区域。
2. 检查以下尺寸和位置是否合适：
  - 整体空间
  - 排水口位置是否合适
  - 水龙头的位置是否合适
3. 安装新浴缸。

## Remove and Install the Bathtub

To remove the old bathtub and install the new one:

1. Lift the old bath levelly and remove it from installation area.
2. Ensure the followings are ok for installation of the new bathtub.
  - The overall space
  - The location of the waste outlet.
  - The location of the faucet.
3. Install the new bathtub.

## 安装后检查

检查项目	是/否
1. 缸体有没有损坏?	
2. 排水管是否通畅?	
3. 进水源是否安装好?	
4. 浴缸底部支撑是否牢固?	

## Check after Installation

Check List	Yes/No
1. The tub has no damage?	
2. The drainage pipeline is clear?	
3. The water supply is well connected?	
4. The support at the bottom of the bathtub is stable enough?	

## 维护与保养

1. 为使浴缸干净整洁，建议您在沐浴后，趁水刚放完而浴缸还没干的时候立即清洁浴缸，这时候容易将肥皂、油脂及污垢等清除。
2. 在水质较硬的地区，由于水中钙的含量高，污垢粘在浴缸壁上会留下黄色的斑痕，所以请您经常清洁浴缸。
3. 清洁时，使用柔软的布配以中性清洁剂或肥皂水清洗，然后将水分擦干。
4. 严禁使用坚硬的物品或具有研磨作用的物品如去污粉等，清洁浴缸及护罩表面，因其可能腐蚀、划伤浴缸表面，从而降低表面光泽。
5. 亚克力浴缸可以抵御绝大多数常用化学品的侵蚀，但仍应避免与油漆，油漆清除剂如氯仿和丙酮等强有机溶剂接触，以免引起表面软化，溶化或龟裂。
6. 严禁将燃着的烟头放在浴缸表面上，否则将留下燃烧的疤痕。
7. 严禁将灯泡，明火放置在浴缸内，以免造成表面破损。
8. 严禁使用甲醇及氢氧化钠擦拭及测试浴缸裙边，以免引起表面掉色或溶化。日常清洁时，使用柔软的布配以中性清洁剂或肥皂水清洗，然后将水分擦干。

以下是对划伤的建议：

- 如果浴缸表面有轻微的划伤或擦痕，可在划伤处喷上金属抛光剂或汽车抛光剂，用电动抛光机磨抛来重新获得光亮表面。
- 如果是较深的划伤，可先使用2000#水砂纸擦去划痕，然后用上述的方法来获得光亮表面。

## Maintenance

1. Clean the bathtub immediately after drainage is complete, as soap, oil and dirt can be easily removed.
2. Clean bathtub frequently if it is used in hard water area, where calcium in water would leave yellow spots on bathtub surface.
3. Use soft cloth with neutral cleaner or soap to clean bathtub and wipe dry.
4. Don't use hard or abrasive stuff like cleaning powder to clean bathtub, as that will corrode, scratch and dull bathtub surface.
5. Avoid contact with paint, paint remover like chloroform or any strong organic solvent like acetone, or bathtub surface will be softened, melted or crackle.
6. Don't place flaming cigarette on bath or it will burn bathtub surface.
7. Don't place bulbs and open fires in bathtub lest bathtub surface is damaged.
8. Don't use methanol and sodium hydroxide to wipe and test the bathtub cladding to avoid discoloration or dissolving of the surface. For daily cleaning, use soft cloth with neutral detergent or soapy water, and then wipe dry.

Suggestion to remove scrach:

- If scratch is slight, spray metal polish or car polish on scratch at first, and then use electric polishing machine to resume glossy surface.
- If scratch is deep, use 2000# abrasive paper to remove scratch at first, and then use same method as above to resume glossy surface.

